



COMMONWEALTH OF KENTUCKY  
TRANSPORTATION CABINET  
[www.transportation.ky.gov/](http://www.transportation.ky.gov/)

Andy Beshear  
GOVERNOR

Jim Gray  
SECRETARY

December 9, 2021

CALL NO. 108  
CONTRACT ID NO. 211056  
ADDENDUM # 4

Subject: Boyd County, STP 5211(123)  
Letting December 10, 2021

- (1) Revised - Proposal Bid Items - Pages 353-362 of 362
- (2) Revised - Plan Sheets - U2, U4, and U7

Proposal revisions are available at <http://transportation.ky.gov/Construction-Procurement/>.

If you have any questions, please contact us at 502-564-3500.

Sincerely,

Rachel Mills,

A handwritten signature in cursive script that reads "Rachel Mills".

Rachel Mills, P.E.  
Director  
Division of Construction Procurement

RM:mr  
Enclosures

**PROPOSAL BID ITEMS**

Report Date 12/9/21

**Section: 0001 - PAVING**

LINE	BID CODE	ALT	DESCRIPTION	QUANTITY	UNIT	UNIT PRIC	FP	AMOUNT
0010	00001		DGA BASE	121,028.00	TON		\$	
0020	00008		CEMENT STABILIZED ROADBED	141,173.00	SQYD		\$	
0030	00078		CRUSHED AGGREGATE SIZE NO 2	11,268.00	TON		\$	
0040	00100		ASPHALT SEAL AGGREGATE	639.00	TON		\$	
0050	00103		ASPHALT SEAL COAT	77.00	TON		\$	
0060	00212		CL2 ASPH BASE 1.00D PG64-22	11,071.00	TON		\$	
0070	00214		CL3 ASPH BASE 1.00D PG64-22	62,475.00	TON		\$	
0080	00301		CL2 ASPH SURF 0.38D PG64-22	4,115.00	TON		\$	
0090	00356		ASPHALT MATERIAL FOR TACK	116.00	TON		\$	
0100	00358		ASPHALT CURING SEAL	142.00	TON		\$	
0110	00388		CL3 ASPH SURF 0.38B PG64-22	12,722.00	TON		\$	
0120	02069		JPC PAVEMENT-10 IN	2,348.00	SQYD		\$	
0130	02081		JPC PAVEMENT-8 IN SHLD	85.00	SQYD		\$	
0140	02083		JPC PAVEMENT-10 IN SHLD	700.00	SQYD		\$	
0150	02084		JPC PAVEMENT-8 IN	3,564.00	SQYD		\$	
0160	02542		CEMENT	3,106.00	TON		\$	
0170	02602		FABRIC-GEOTEXTILE CLASS 1	32,330.00	SQYD		\$	
0180	02702		SAND FOR BLOTTER	353.00	TON		\$	

**Section: 0002 - ROADWAY**

LINE	BID CODE	ALT	DESCRIPTION	QUANTITY	UNIT	UNIT PRIC	FP	AMOUNT
0190	00071		CRUSHED AGGREGATE SIZE NO 57	1.00	TON		\$	
0200	00078		CRUSHED AGGREGATE SIZE NO 2	90.00	TON		\$	
0210	00440		ENTRANCE PIPE-15 IN	288.00	LF		\$	
0220	00441		ENTRANCE PIPE-18 IN	467.00	LF		\$	
0230	00443		ENTRANCE PIPE-24 IN	213.00	LF		\$	
0240	00445		ENTRANCE PIPE-30 IN	49.00	LF		\$	
0250	00462		CULVERT PIPE-18 IN	621.00	LF		\$	
0260	00464		CULVERT PIPE-24 IN	1,788.00	LF		\$	
0270	00466		CULVERT PIPE-30 IN	72.00	LF		\$	
0280	00468		CULVERT PIPE-36 IN	139.00	LF		\$	
0290	00469		CULVERT PIPE-42 IN	209.00	LF		\$	
0300	00470		CULVERT PIPE-48 IN	585.00	LF		\$	
0310	00471		CULVERT PIPE-54 IN	237.00	LF		\$	
0320	00521		STORM SEWER PIPE-15 IN	152.00	LF		\$	
0330	00522		STORM SEWER PIPE-18 IN	648.00	LF		\$	
0340	00526		STORM SEWER PIPE-30 IN	188.00	LF		\$	
0350	00528		STORM SEWER PIPE-36 IN	56.00	LF		\$	
0360	01000		PERFORATED PIPE-4 IN	30.00	LF		\$	
0370	01002		PERFORATED PIPE-8 IN	30.00	LF		\$	
0380	01204		PIPE CULVERT HEADWALL-18 IN	16.00	EACH		\$	
0390	01208		PIPE CULVERT HEADWALL-24 IN	10.00	EACH		\$	
0400	01210		PIPE CULVERT HEADWALL-30 IN	4.00	EACH		\$	
0410	01212		PIPE CULVERT HEADWALL-36 IN	5.00	EACH		\$	
0420	01214		PIPE CULVERT HEADWALL-42 IN	4.00	EACH		\$	

**PROPOSAL BID ITEMS**

Report Date 12/9/21

LINE	BID CODE	ALT	DESCRIPTION	QUANTITY	UNIT	UNIT PRIC	FP	AMOUNT
0430	01216		PIPE CULVERT HEADWALL-48 IN	1.00	EACH		\$	
0440	01219		PIPE CULVERT HEADWALL-54 IN EQUIV	2.00	EACH		\$	
0450	01310		REMOVE PIPE	1,935.00	LF		\$	
0460	01433		SLOPED BOX OUTLET TYPE 1-18 IN	1.00	EACH		\$	
0470	01434		SLOPED BOX OUTLET TYPE 1-24 IN	1.00	EACH		\$	
0480	01450		S & F BOX INLET-OUTLET-18 IN	2.00	EACH		\$	
0490	01451		S & F BOX INLET-OUTLET-24 IN	4.00	EACH		\$	
0500	01456		CURB BOX INLET TYPE A	4.00	EACH		\$	
0510	01480		CURB BOX INLET TYPE B	6.00	EACH		\$	
0520	01490		DROP BOX INLET TYPE 1	4.00	EACH		\$	
0530	01511		DROP BOX INLET TYPE 5D	1.00	EACH		\$	
0540	01517		DROP BOX INLET TYPE 5F	2.00	EACH		\$	
0550	01538		DROP BOX INLET TYPE 7	1.00	EACH		\$	
0560	01544		DROP BOX INLET TYPE 11	1.00	EACH		\$	
0570	01691		FLUME INLET TYPE 2	2.00	EACH		\$	
0580	01761		MANHOLE TYPE B	2.00	EACH		\$	
0590	01767		MANHOLE TYPE C	1.00	EACH		\$	
0600	01786		FILL AND CAP MANHOLE	1.00	EACH		\$	
0610	01810		STANDARD CURB AND GUTTER	2,226.00	LF		\$	
0620	01875		STANDARD HEADER CURB	275.00	LF		\$	
0630	01982		DELINEATOR FOR GUARDRAIL MONO DIRECTIONAL WHITE	316.00	EACH		\$	
0640	01984		DELINEATOR FOR BARRIER - WHITE	50.00	EACH		\$	
0650	02010		ADJUST MEDIAN BOX	1.00	EACH		\$	
0660	02014		BARRICADE-TYPE III	60.00	EACH		\$	
0670	02091		REMOVE PAVEMENT	6,179.00	SQYD		\$	
0680	02157		PAVED DITCH TYPE 1	2,986.00	SQYD		\$	
0690	02159		TEMP DITCH	11,140.00	LF		\$	
0700	02160		CLEAN TEMP DITCH	5,570.00	LF		\$	
0710	02200		ROADWAY EXCAVATION	739,299.00	CUYD		\$	
0720	02203		STRUCTURE EXCAV-UNCLASSIFIED	51.00	CUYD		\$	
0725	02223		GRANULAR EMBANKMENT (ADDED 12-7-2021)	2,451.00	CUYD		\$	
0730	02242		WATER	901.00	MGAL		\$	
0740	02259		FENCE-TEMP	550.00	LF		\$	
0750	02273		FENCE-4 FT CHAIN LINK	550.00	LF		\$	
0760	02360		GUARDRAIL TERMINAL SECTION NO 1	23.00	EACH		\$	
0770	02367		GUARDRAIL END TREATMENT TYPE 1	9.00	EACH		\$	
0780	02371		GUARDRAIL END TREATMENT TYPE 7	3.00	EACH		\$	
0790	02381		REMOVE GUARDRAIL	12,756.00	LF		\$	
0800	02391		GUARDRAIL END TREATMENT TYPE 4A	22.00	EACH		\$	
0810	02397		TEMP GUARDRAIL	5,913.00	LF		\$	
0820	02404		SEPTIC TANK TREATMENT	1.00	EACH		\$	
0830	02429		RIGHT-OF-WAY MONUMENT TYPE 1	100.00	EACH		\$	
0840	02430		RIGHT-OF-WAY MONUMENT TYPE 1A	5.00	EACH		\$	
0850	02432		WITNESS POST	131.00	EACH		\$	
0860	02479		CAP MANHOLE	5.00	SQYD		\$	
0870	02483		CHANNEL LINING CLASS II	5,114.00	TON		\$	
0880	02484		CHANNEL LINING CLASS III	4,808.00	TON		\$	
0890	02542		CEMENT	1.00	TON		\$	

**PROPOSAL BID ITEMS**

Report Date 12/9/21

LINE	BID CODE	ALT	DESCRIPTION	QUANTITY	UNIT	UNIT PRIC	FP	AMOUNT
0900	02545		CLEARING AND GRUBBING 113 ACRES	1.00	LS		\$	
0910	02555		CONCRETE-CLASS B	51.00	CUYD		\$	
0920	02562		TEMPORARY SIGNS	1,036.00	SQFT		\$	
0930	02585		EDGE KEY	668.00	LF		\$	
0940	02602		FABRIC-GEOTEXTILE CLASS 1	2,495.00	SQYD		\$	
0950	02603		FABRIC-GEOTEXTILE CLASS 2	4,790.00	SQYD		\$	
0960	02607		FABRIC-GEOTEXTILE CLASS 2 FOR PIPE	20,643.00	SQYD	\$2.00	\$	\$41,286.00
0970	02625		REMOVE HEADWALL	6.00	EACH		\$	
0980	02650		MAINTAIN & CONTROL TRAFFIC	1.00	LS		\$	
0990	02651		DIVERSIONS (BY-PASS DETOURS) #1- STA. 554+76 TO STA. 586+68	1.00	LS		\$	
1000	02651		DIVERSIONS (BY-PASS DETOURS) #2- STA. 630+06 TO STA. 635+87	1.00	LS		\$	
1010	02651		DIVERSIONS (BY-PASS DETOURS) #3- STA. 100+12 TO STA. 111+00	1.00	LS		\$	
1020	02655		CROSSOVER #1	1.00	LS		\$	
1030	02655		CROSSOVER #2	1.00	LS		\$	
1040	02655		CROSSOVER #3	1.00	LS		\$	
1050	02655		CROSSOVER #4	1.00	LS		\$	
1060	02671		PORTABLE CHANGEABLE MESSAGE SIGN	4.00	EACH		\$	
1070	02676		MOBILIZATION FOR MILL & TEXT	1.00	LS		\$	
1080	02677		ASPHALT PAVE MILLING & TEXTURING	150.00	TON		\$	
1090	02679		POROUS UNDERDRAIN	19,483.00	LF		\$	
1100	02690		SAFELoading	258.00	CUYD		\$	
1120	02696		SHOULDER RUMBLE STRIPS	44,560.00	LF		\$	
1130	02701		TEMP SILT FENCE	11,140.00	LF		\$	
1140	02703		SILT TRAP TYPE A	102.00	EACH		\$	
1150	02704		SILT TRAP TYPE B	102.00	EACH		\$	
1160	02705		SILT TRAP TYPE C	102.00	EACH		\$	
1170	02706		CLEAN SILT TRAP TYPE A	102.00	EACH		\$	
1180	02707		CLEAN SILT TRAP TYPE B	102.00	EACH		\$	
1190	02708		CLEAN SILT TRAP TYPE C	102.00	EACH		\$	
1200	02711		SEDIMENTATION BASIN	562.00	CUYD		\$	
1210	02712		CLEAN SEDIMENTATION BASIN	562.00	CUYD		\$	
1220	02726		STAKING	1.00	LS		\$	
1230	02731		REMOVE STRUCTURE STA. 572+40	1.00	LS		\$	
1240	02731		REMOVE STRUCTURE STA. 615+95	1.00	LS		\$	
1250	02731		REMOVE STRUCTURE STA. 704+20	1.00	LS		\$	
1260	02731		REMOVE STRUCTURE STA. 561+70	1.00	LS		\$	
1270	02731		REMOVE STRUCTURE STA. 643+00	1.00	LS		\$	
1280	02775		ARROW PANEL	4.00	EACH		\$	
1290	03171		CONCRETE BARRIER WALL TYPE 9T	2,480.00	LF		\$	

**PROPOSAL BID ITEMS**

Report Date 12/9/21

LINE	BID CODE	ALT	DESCRIPTION	QUANTITY	UNIT	UNIT PRIC	FP	AMOUNT
1291	03340		STEEL PIPE-2 1/2 IN (ADDED 12-7-2021)	42.00	LF		\$	
1292	03343		STEEL PIPE-4 IN (ADDED 12-7-2021)	42.00	LF		\$	
1300	05950		EROSION CONTROL BLANKET	31,510.00	SQYD		\$	
1310	05952		TEMP MULCH	364,610.00	SQYD		\$	
1320	05953		TEMP SEEDING AND PROTECTION	273,460.00	SQYD		\$	
1330	05963		INITIAL FERTILIZER	9.00	TON		\$	
1340	05964		MAINTENANCE FERTILIZER	15.00	TON		\$	
1350	05985		SEEDING AND PROTECTION	377,520.00	SQYD		\$	
1360	05992		AGRICULTURAL LIMESTONE	234.00	TON		\$	
1370	06401		FLEXIBLE DELINEATOR POST-M/W	375.00	EACH		\$	
1380	06404		FLEXIBLE DELINEATOR POST-M/Y	17.00	EACH		\$	
1390	06510		PAVE STRIPING-TEMP PAINT-4 IN	442,616.00	LF		\$	
1400	06542		PAVE STRIPING-THERMO-6 IN W	56,026.00	LF		\$	
1410	06543		PAVE STRIPING-THERMO-6 IN Y	61,918.00	LF		\$	
1420	06544		PAVE STRIPING-THERMO-8 IN W	896.00	LF		\$	
1430	06568		PAVE MARKING-THERMO STOP BAR-24IN	635.00	LF		\$	
1440	06569		PAVE MARKING-THERMO CROSS-HATCH	1,206.00	SQFT		\$	
1450	06574		PAVE MARKING-THERMO CURV ARROW	39.00	EACH		\$	
1460	06576		PAVE MARKING-THERMO ONLY	2.00	EACH		\$	
1470	06600		REMOVE PAVEMENT MARKER TYPE V	17.00	EACH		\$	
1480	06610		INLAID PAVEMENT MARKER-MW	194.00	EACH		\$	
1490	06612		INLAID PAVEMENT MARKER-BY	603.00	EACH		\$	
1500	06613		INLAID PAVEMENT MARKER-B W/R	52.00	EACH		\$	
1510	08100		CONCRETE-CLASS A	141.00	CUYD		\$	
1520	08150		STEEL REINFORCEMENT	436.00	LB		\$	
1530	08903		CRASH CUSHION TY VI CLASS BT TL3	2.00	EACH		\$	
1540	10020NS		FUEL ADJUSTMENT	365,553.00	DOLL	\$1.00	\$	\$365,553.00
1550	10030NS		ASPHALT ADJUSTMENT	217,745.00	DOLL	\$1.00	\$	\$217,745.00
1560	20191ED		OBJECT MARKER TY 3	31.00	EACH		\$	
1570	20411ED		LAW ENFORCEMENT OFFICER	1,000.00	HOUR		\$	
1580	20465EC		CLEAN CULVERT	1.00	LS		\$	
1590	20597EC		DITCH EXCAVATION	359.00	CUYD		\$	
1600	20667ED		PNEUMATIC BACKSTOWING	120.00	TON		\$	
1610	21802EN		G/R STEEL W BEAM-S FACE (7 FT POST)	16,625.00	LF		\$	
1620	22581EN		ENTRANCE PIPE-36 IN	55.00	LF		\$	
1630	22664EN		WATER BLASTING EXISTING STRIPE	331,962.00	LF		\$	
1640	22883EN		CONCRETE WEDGE CURB	290.00	LF		\$	
1650	23124EN		BORE AND JACK PIPE-48 IN	150.00	LF		\$	
1660	24540		R/W MONUMENT TYPE 3	29.00	EACH		\$	
1670	24561EN		ENTRANCE PIPE-42 IN	82.00	FT		\$	
1680	24631EC		BARCODE SIGN INVENTORY	5.00	EACH		\$	
1690	24663ED		WITNESS R/W MONUMENT TYPE 4	2.00	EACH		\$	
1700	24683ED		PAVE MARKING-THERMO DOTTED LANE EXTEN	853.00	LF		\$	
1710	24805ED		OBJECT MARKER TYPE 4	6.00	EACH		\$	
1720	24814EC		PIPELINE INSPECTION	4,299.00	LF		\$	
1730	25078ED		THRIE BEAM GUARDRAIL TRANSITION TL-3	300.00	EACH		\$	
1740	25118EC		REMOVE AND REPLACE BRICK SIGN	3.00	EACH		\$	

**PROPOSAL BID ITEMS**

Report Date 12/9/21

**Section: 0003 - BRIDGE-(US 60 OVER WILLIAMSC)**

LINE	BID CODE	ALT	DESCRIPTION	QUANTITY	UNIT	UNIT PRIC	FP	AMOUNT
1750	02231		STRUCTURE GRANULAR BACKFILL	271.00	CUYD		\$	
1760	02692		SETTLEMENT PLATFORM	1.00	EACH		\$	
1770	03299		ARMORED EDGE FOR CONCRETE	116.00	LF		\$	
1780	08003		FOUNDATION PREPARATION	1.00	LS		\$	
1790	08019		CYCLOPEAN STONE RIP RAP	317.00	TON		\$	
1800	08020		CRUSHED AGGREGATE SLOPE PROT	82.00	TON		\$	
1810	08033		TEST PILES	136.00	LF		\$	
1820	08039		PRE-DRILLING FOR PILES	220.00	LF		\$	
1830	08051		PILES-STEEL HP14X89	1,909.00	LF		\$	
1840	08095		PILE POINTS-14 IN	84.00	EACH		\$	
1850	08100		CONCRETE-CLASS A	313.30	CUYD		\$	
1860	08104		CONCRETE-CLASS AA	323.30	CUYD		\$	
1870	08150		STEEL REINFORCEMENT	49,076.00	LB		\$	
1880	08151		STEEL REINFORCEMENT-EPOXY COATED	95,093.00	LB		\$	
1890	08633		PRECAST PC I BEAM TYPE 3	1,049.00	LF		\$	
1900	23378EC		CONCRETE SEALING	19,662.00	SQFT		\$	
1910	25028ED		RAIL SYSTEM SINGLE SLOPE - 40 IN	358.00	LF		\$	

**Section: 0004 - BRIDGE-(US 60 OVER LITTLE SANDY)**

LINE	BID CODE	ALT	DESCRIPTION	QUANTITY	UNIT	UNIT PRIC	FP	AMOUNT
1920	02231		STRUCTURE GRANULAR BACKFILL	248.00	CUYD		\$	
1930	03299		ARMORED EDGE FOR CONCRETE	110.00	LF		\$	
1940	08003		FOUNDATION PREPARATION	1.00	LS		\$	
1950	08019		CYCLOPEAN STONE RIP RAP	834.00	TON		\$	
1960	08020		CRUSHED AGGREGATE SLOPE PROT	54.00	TON		\$	
1970	08033		TEST PILES	111.00	LF		\$	
1980	08039		PRE-DRILLING FOR PILES	270.00	LF		\$	
1990	08051		PILES-STEEL HP14X89	1,172.00	LF		\$	
2000	08095		PILE POINTS-14 IN	84.00	EACH		\$	
2010	08100		CONCRETE-CLASS A	300.80	CUYD		\$	
2020	08104		CONCRETE-CLASS AA	324.10	CUYD		\$	
2030	08150		STEEL REINFORCEMENT	46,925.00	LB		\$	
2040	08151		STEEL REINFORCEMENT-EPOXY COATED	100,766.00	LB		\$	
2050	08633		PRECAST PC I BEAM TYPE 3	1,079.00	LF		\$	
2060	23378EC		CONCRETE SEALING	19,838.00	SQFT		\$	
2070	25028ED		RAIL SYSTEM SINGLE SLOPE - 40 IN	368.00	LF		\$	

**Section: 0005 - BRIDGE-PRINCESS DR OVER WILLIAMS)**

LINE	BID CODE	ALT	DESCRIPTION	QUANTITY	UNIT	UNIT PRIC	FP	AMOUNT
2080	02231		STRUCTURE GRANULAR BACKFILL	345.00	CUYD		\$	
2090	03299		ARMORED EDGE FOR CONCRETE	64.00	LF		\$	
2100	08003		FOUNDATION PREPARATION	1.00	LS		\$	

**PROPOSAL BID ITEMS**

Report Date 12/9/21

LINE	BID CODE	ALT	DESCRIPTION	QUANTITY	UNIT	UNIT PRIC	FP	AMOUNT
2110	08019		CYCLOPEAN STONE RIP RAP	235.00	TON		\$	
2120	08033		TEST PILES	95.00	LF		\$	
2130	08039		PRE-DRILLING FOR PILES	48.00	LF		\$	
2140	08051		PILES-STEEL HP14X89	764.00	LF		\$	
2150	08095		PILE POINTS-14 IN	20.00	EACH		\$	
2160	08100		CONCRETE-CLASS A	125.10	CUYD		\$	
2170	08104		CONCRETE-CLASS AA	125.30	CUYD		\$	
2180	08150		STEEL REINFORCEMENT	5,918.00	LB		\$	
2190	08151		STEEL REINFORCEMENT-EPOXY COATED	29,708.00	LB		\$	
2200	08633		PRECAST PC I BEAM TYPE 3	304.00	LF		\$	
2210	23378EC		CONCRETE SEALING	6,330.00	SQFT		\$	
2220	25028ED		RAIL SYSTEM SINGLE SLOPE - 40 IN	156.00	LF		\$	

**Section: 0006 - BRIDGE- (US 60 OVER CSX RR)**

LINE	BID CODE	ALT	DESCRIPTION	QUANTITY	UNIT	UNIT PRIC	FP	AMOUNT
2230	02231		STRUCTURE GRANULAR BACKFILL	349.00	CUYD		\$	
2240	02692		SETTLEMENT PLATFORM	1.00	EACH		\$	
2250	03299		ARMORED EDGE FOR CONCRETE	119.00	LF		\$	
2260	08002		STRUCTURE EXCAV-SOLID ROCK	199.00	CUYD		\$	
2270	08003		FOUNDATION PREPARATION	1.00	LS		\$	
2280	08020		CRUSHED AGGREGATE SLOPE PROT	419.00	TON		\$	
2290	08033		TEST PILES	139.00	LF		\$	
2300	08039		PRE-DRILLING FOR PILES	1,883.00	LF		\$	
2310	08051		PILES-STEEL HP14X89	2,581.00	LF		\$	
2320	08095		PILE POINTS-14 IN	102.00	EACH		\$	
2330	08100		CONCRETE-CLASS A	565.50	CUYD		\$	
2340	08104		CONCRETE-CLASS AA	802.70	CUYD		\$	
2350	08150		STEEL REINFORCEMENT	100,531.00	LB		\$	
2360	08151		STEEL REINFORCEMENT-EPOXY COATED	220,755.00	LB		\$	
2370	08636		PRECAST PC I BEAM TYPE 5 (REVISED 12-9-2021)	2,413.90	LF		\$	
2380	23378EC		CONCRETE SEALING	44,114.00	SQFT		\$	
2390	23964EC		PROTECTIVE FENCE	788.00	LF		\$	
2400	25028ED		RAIL SYSTEM SINGLE SLOPE - 40 IN	816.00	LF		\$	

**Section: 0007 - BRIDGE- CULVERT STA. 537+63.75**

LINE	BID CODE	ALT	DESCRIPTION	QUANTITY	UNIT	UNIT PRIC	FP	AMOUNT
2410	02403		REMOVE CONCRETE MASONRY	19.00	CUYD		\$	
2420	08003		FOUNDATION PREPARATION	1.00	LS		\$	
2430	08100		CONCRETE-CLASS A	41.70	CUYD		\$	
2440	08150		STEEL REINFORCEMENT	3,664.00	LB		\$	

**Section: 0008 - BRIDGE-CULVERT STA.561+70.00**



**PROPOSAL BID ITEMS**

Report Date 12/9/21

LINE	BID CODE	ALT	DESCRIPTION	QUANTITY	UNIT	UNIT PRIC	FP	AMOUNT
2450	02483		CHANNEL LINING CLASS II	11.00	TON		\$	
2460	08003		FOUNDATION PREPARATION	1.00	LS		\$	
2470	08100		CONCRETE-CLASS A	80.60	CUYD		\$	
2480	08150		STEEL REINFORCEMENT	7,010.00	LB		\$	

**Section: 0009 - BRIDGE- CULVERT STA. 588+71**

LINE	BID CODE	ALT	DESCRIPTION	QUANTITY	UNIT	UNIT PRIC	FP	AMOUNT
2490	02483		CHANNEL LINING CLASS II	27.00	TON		\$	
2500	08003		FOUNDATION PREPARATION	1.00	LS		\$	
2510	08100		CONCRETE-CLASS A	70.80	CUYD		\$	
2520	08150		STEEL REINFORCEMENT	6,483.00	LB		\$	

**Section: 0010 - BRIDGE- CULVERT STA.596+27**

LINE	BID CODE	ALT	DESCRIPTION	QUANTITY	UNIT	UNIT PRIC	FP	AMOUNT
2530	02403		REMOVE CONCRETE MASONRY	28.00	CUYD		\$	
2540	02483		CHANNEL LINING CLASS II	32.00	TON		\$	
2550	08003		FOUNDATION PREPARATION	1.00	LS		\$	
2560	08100		CONCRETE-CLASS A	65.00	CUYD		\$	
2570	08150		STEEL REINFORCEMENT	5,426.00	LB		\$	

**Section: 0011 - BRIDGE- CULVERT STA. 631+86**

LINE	BID CODE	ALT	DESCRIPTION	QUANTITY	UNIT	UNIT PRIC	FP	AMOUNT
2580	02403		REMOVE CONCRETE MASONRY	8.00	CUYD		\$	
2590	02483		CHANNEL LINING CLASS II	16.00	TON		\$	
2600	08003		FOUNDATION PREPARATION	1.00	LS		\$	
2610	08100		CONCRETE-CLASS A	44.00	CUYD		\$	
2620	08150		STEEL REINFORCEMENT	3,239.00	LB		\$	

**Section: 0012 - BRIDGE- CULVERT STA. 48+78**

LINE	BID CODE	ALT	DESCRIPTION	QUANTITY	UNIT	UNIT PRIC	FP	AMOUNT
2630	02483		CHANNEL LINING CLASS II	21.00	TON		\$	
2640	08003		FOUNDATION PREPARATION	1.00	LS		\$	
2650	08100		CONCRETE-CLASS A	126.20	CUYD		\$	
2660	08150		STEEL REINFORCEMENT	13,055.00	LB		\$	

**Section: 0013 - SEWER**

LINE	BID CODE	ALT	DESCRIPTION	QUANTITY	UNIT	UNIT PRIC	FP	AMOUNT
2670	15000		S BYPASS PUMPING	2.00	EACH		\$	



**PROPOSAL BID ITEMS**

Report Date 12/9/21

LINE	BID CODE	ALT	DESCRIPTION	QUANTITY	UNIT	UNIT PRIC	FP	AMOUNT
2680	15011		S DIRECTIONAL BORE (REVISED 12-9-2021)	732.00	LF		\$	
2690	15014		S ENCASEMENT STEEL BORED RANGE 1	84.00	LF		\$	
2700	15016		S ENCASEMENT STEEL BORED RANGE 3 (REVISED 12-9-2021)	658.00	LF		\$	
2710	15017		S ENCASEMENT STEEL BORED RANGE 4 (REVISED 12-9-2021)	351.00	LF		\$	
2720	15023		S ENCASEMENT STEEL OPEN CUT RANGE 4	328.00	LF		\$	
2730	15029		S FORCE MAIN AIR RLS/VAC VLV SPCL (REVISED 12-9-2021)	2.00	EACH		\$	
2740	15030		S FORCE MAIN DIRECTIONAL BORE (REVISED 12-9-2021)	2,172.00	LF		\$	
2750	15057		S FORCE MAIN PVC 02 INCH	174.00	LF		\$	
2760	15059		S FORCE MAIN PVC 04 INCH (REVISED 12-9-2021)	805.00	LF		\$	
2770	15060		S FORCE MAIN PVC 06 INCH (REVISED 12-9-2021)	3,989.00	LF		\$	
2780	15074		S FORCE MAIN TIE-IN 06 INCH	6.00	EACH		\$	
2790	15084		S FORCE MAIN VALVE GATE	2.00	EACH		\$	
2800	15090		S LATERAL SHORT SIDE 06 INCH	40.00	EACH		\$	
2810	15092		S MANHOLE (REVISED 12-9-2021)	13.00	EACH		\$	
2820	15093		S MANHOLE ABANDON/REMOVE (REVISED 12-9-2021)	17.00	EACH		\$	
2830	15094		S MANHOLE ADJUST TO GRADE	2.00	EACH		\$	
2840	15096		S MANHOLE CASTING WATERTIGHT	1.00	EACH		\$	
2850	15101		S MANHOLE WITH DROP	6.00	EACH		\$	
2860	15112		S PIPE PVC 08 INCH (REVISED 12-9-2021)	3,350.00	LF		\$	
2870	15119		S PUMP STATION	1.00	EACH		\$	
2880	15120		S SPECIAL ITEM	1.00	EACH		\$	
2890	15122		S STRUCTURE REMOVAL (REVISED 12-9-2021)	2.00	EACH		\$	
2900	15136		S LATERAL LOCATE	2.00	EACH		\$	

**Section: 0014 - SIGNALIZATION**

LINE	BID CODE	ALT	DESCRIPTION	QUANTITY	UNIT	UNIT PRIC	FP	AMOUNT
2910	04820		TRENCHING AND BACKFILLING	80.00	LF		\$	
2920	04844		CABLE-NO. 14/5C	2,000.00	LF		\$	
2930	04886		MESSENGER-15400 LB	750.00	LF		\$	
2940	04932		INSTALL STEEL STRAIN POLE	4.00	EACH		\$	
2950	04953		TEMP RELOCATION OF SIGNAL HEAD	26.00	EACH		\$	
2960	20188NS835		INSTALL LED SIGNAL-3 SECTION	13.00	EACH		\$	
2970	20390NS835		INSTALL COORDINATING UNIT	1.00	EACH		\$	
2980	23157EN		TRAFFIC SIGNAL POLE BASE	20.00	CUYD		\$	
2990	24901EC		PVC CONDUIT-2 IN-SCHEDULE 80	80.00	LF		\$	
3000	24908EC		INSTALL SIGNAL CONTROLLER-TY ATC	1.00	EACH		\$	
3010	24955ED		REMOVE SIGNAL EQUIPMENT	1.00	EACH		\$	
3020	26119EC		INSTALL RADAR PRESENCE DETECTOR TYPE A	4.00	EACH		\$	

**PROPOSAL BID ITEMS**

Report Date 12/9/21

LINE	BID CODE	ALT	DESCRIPTION	QUANTITY	UNIT	UNIT PRIC	FP	AMOUNT
3030	26120EC		INSTALL RADAR ADVANCE DETECTOR TYPE B	2.00	EACH		\$	

**Section: 0015 - LIGHTING**

LINE	BID CODE	ALT	DESCRIPTION	QUANTITY	UNIT	UNIT PRIC	FP	AMOUNT
3040	04701		POLE 40 FT MTG HT	4.00	EACH		\$	
3050	04724		BRACKET 12 FT	1.00	EACH		\$	
3060	04725		BRACKET 15 FT	3.00	EACH		\$	
3070	04740		POLE BASE	4.00	EACH		\$	
3080	04750		TRANSFORMER BASE	4.00	EACH		\$	
3090	04761		LIGHTING CONTROL EQUIPMENT	1.00	EACH		\$	
3100	04780		FUSED CONNECTOR KIT	8.00	EACH		\$	
3110	04795		CONDUIT-2 IN	500.00	LF		\$	
3120	04820		TRENCHING AND BACKFILLING	200.00	LF		\$	
3130	04832		WIRE-NO. 12	850.00	LF		\$	
3140	20391NS835		ELECTRICAL JUNCTION BOX TYPE A	6.00	EACH		\$	
3150	21543EN		BORE AND JACK CONDUIT	500.00	LF		\$	
3160	23778EC		WIRE-NO. 10	2,500.00	LF		\$	
3170	24589ED		LED LUMINAIRE	4.00	EACH		\$	
3180	24900EC		PVC CONDUIT-1 1/4 IN-SCHEDULE 80	200.00	LF		\$	

**Section: 0016 - WATERLINE**

LINE	BID CODE	ALT	DESCRIPTION	QUANTITY	UNIT	UNIT PRIC	FP	AMOUNT
3190	14000		W AIR RELEASE VALVE 1 INCH	6.00	EACH		\$	
3200	14004		W DIRECTIONAL BORE	2,954.00	LF		\$	
3210	14006		W ENCASMENT STEEL BORED RANGE 1	388.00	LF		\$	
3220	14008		W ENCASMENT STEEL BORED RANGE 3	1,005.00	LF		\$	
3230	14009		W ENCASMENT STEEL BORED RANGE 4	297.00	LF		\$	
3240	14010		W ENCASMENT STEEL BORED RANGE 5	1,226.00	LF		\$	
3250	14012		W ENCASMENT STEEL OPEN CUT RANGE 1	188.00	LF		\$	
3260	14014		W ENCASMENT STEEL OPEN CUT RANGE 3	78.00	LF		\$	
3270	14016		W ENCASMENT STEEL OPEN CUT RANGE 5	564.00	LF		\$	
3280	14019		W FIRE HYDRANT ASSEMBLY	13.00	EACH		\$	
3290	14021		W FIRE HYDRANT REMOVE	8.00	EACH		\$	
3300	14022		W FLUSH HYDRANT ASSEMBLY	3.00	EACH		\$	
3310	14028		W METER 3/4 INCH	2.00	EACH		\$	
3320	14030		W METER RELOCATE	17.00	EACH		\$	
3330	14031		W METER VAULT	1.00	EACH		\$	
3340	14034		W PIPE DUCTILE IRON 03 INCH	596.00	LF		\$	
3350	14036		W PIPE DUCTILE IRON 06 INCH	746.00	LF		\$	
3360	14039		W PIPE DUCTILE IRON 12 INCH	1,742.00	LF		\$	
3370	14056		W PIPE PVC 02 INCH	1,483.00	LF		\$	
3380	14057		W PIPE PVC 03 INCH	2,097.00	LF		\$	
3390	14059		W PIPE PVC 06 INCH	3,274.00	LF		\$	
3400	14060		W PIPE PVC 08 INCH	1,175.00	LF		\$	

**PROPOSAL BID ITEMS**

Report Date 12/9/21

LINE	BID CODE	ALT	DESCRIPTION	QUANTITY	UNIT	UNIT PRIC	FP	AMOUNT
3410	14062		W PIPE PVC 12 INCH	25,454.00	LF		\$	
3420	14080		W SERV PE/PLST LONG SIDE 3/4 IN	5.00	EACH		\$	
3430	14084		W SERV PE/PLST SHORT SIDE 2 IN	4.00	EACH		\$	
3440	14085		W SERV PE/PLST SHORT SIDE 3/4 IN	23.00	EACH		\$	
3450	14088		W STRUCTURE REMOVAL	2.00	EACH		\$	
3460	14089		W TAPPING SLEEVE AND VALVE SIZE 1	12.00	EACH		\$	
3470	14090		W TAPPING SLEEVE AND VALVE SIZE 2	10.00	EACH		\$	
3480	14092		W TIE-IN 03 INCH	4.00	EACH		\$	
3490	14094		W TIE-IN 06 INCH	2.00	EACH		\$	
3500	14095		W TIE-IN 08 INCH	1.00	EACH		\$	
3510	14096		W TIE-IN 10 INCH	1.00	EACH		\$	
3520	14097		W TIE-IN 12 INCH	2.00	EACH		\$	
3530	14105		W VALVE 06 INCH	6.00	EACH		\$	
3540	14106		W VALVE 08 INCH	1.00	EACH		\$	
3550	14108		W VALVE 12 INCH	25.00	EACH		\$	
3560	14115		W VALVE CUT-IN 03 INCH	8.00	EACH		\$	
3570	14117		W VALVE CUT-IN 06 INCH	7.00	EACH		\$	
3580	14118		W VALVE CUT-IN 08 INCH	2.00	EACH		\$	
3590	14119		W VALVE CUT-IN 10 INCH	1.00	EACH		\$	
3600	14120		W VALVE CUT-IN 12 INCH	9.00	EACH		\$	
3610	14126		W ENCASEMENT SPECIAL OPEN CUT 12" POLY ENCASEMENT	191.00	LF		\$	
3620	14126		W ENCASEMENT SPECIAL 18 IN	44.00	LF		\$	
3630	14130		W METER WITH PRV 3/4 INCH	6.00	EACH		\$	
3640	14132		W PRESSURE REDUCING VALVE 02 INCH	12.00	EACH		\$	
3650	14133		W PRESSURE REDUCING VALVE 03 INCH	4.00	EACH		\$	
3660	14135		W PRESSURE REDUCING VALVE 06 INCH	1.00	EACH		\$	
3670	14143		W PRESSURE REDUCING VALVE SPECIAL	19.00	EACH		\$	
3680	14147		W SERV COPPER LONG SIDE 2 IN	1.00	EACH		\$	
3690	14152		W SERV COPPER SHORT SIDE 3/4 IN	13.00	EACH		\$	
3700	14156		W METER REMOVE	17.00	EACH		\$	
3710	23565EC		ARTICULATED CONCRETE BLOCK SYSTEM	437.00	SQFT		\$	

**Section: 0017 - TRAINEES**

LINE	BID CODE	ALT	DESCRIPTION	QUANTITY	UNIT	UNIT PRIC	FP	AMOUNT
3720	02742		TRAINEE PAYMENT REIMBURSEMENT CEMENT MASON	1,200.00	HOUR		\$	
3730	02742		TRAINEE PAYMENT REIMBURSEMENT GROUP 2, 3, 4 OPERATORS	1,400.00	HOUR		\$	

**Section: 0018 - MOBILIZATION AND/OR DEMOBILIZATION**

LINE	BID CODE	ALT	DESCRIPTION	QUANTITY	UNIT	UNIT PRIC	FP	AMOUNT
3740	02568		MOBILIZATION	1.00	LS		\$	
3750	02569		DEMOBILIZATION	1.00	LS		\$	



# SANITARY GENERAL SUMMARY

COUNTY OF GREENUP	ITEM NO. 9-8400.00	SHEET NO. U2
----------------------	-----------------------	-----------------

△ REVISION #1 - QUANTITIES 12/08/2021

ITEM	DESCRIPTION	UNIT	U5	U6	U7	U8	U9	U10	U11	U12	U13	U14	TOTALS
15000	S BYPASS PUMPING	EA.											2
15011	S DIRECTIONAL BORE	L.F.	580			2							732
15014	S ENCASMENT STEEL RANGE 1 (4 INCH)	L.F.	84								152		84
15016	S ENCASMENT STEEL RANGE 3 (12 INCH)	L.F.		29	223	112	220	74					658
15017	S ENCASMENT STEEL RANGE 4 (16 INCH)	L.F.	204								147		351
15023	S ENCASMENT STEEL OPEN CUT RANGE 4 (16 INCH)	L.F.				328							328
15029	S FORCE MAIN AIR RIS/VACUUM VLV	L.F.	1			1						1	2
15030	S FORCE MAIN DIRECTIONAL BORE	L.F.		29	1628	119	230	80					2172
15057	S FORCE MAIN PVC 02 INCH	L.F.											174
15059	S FORCE MAIN PVC 04 INCH	L.F.	805										805
15060	S FORCE MAIN PVC 06 INCH	L.F.		471	1,708	265	665	350				530	3989
15074	S FORCE MAIN TIE-IN 06 INCH	EA.	1			1	1	2					6
15084	S FORCE MAIN VALVE GATE	EA.		2									2
15090	S LATERAL SHORT SIDE 06 INCH	L.F.	20								20		40
15092	S MANHOLE	EA.	7			1							13
15093	S MANHOLE ABANDONED/REMOVE	EA.	3			1			3	3	2		17
15094	S MANHOLE AJUST TO GRADE	EA.											2
15096	S MANHOLE CASTING WATERTIGHT	EA.				1							1
15101	S MANHOLE WITH DROP	EA.							1				6
15112	S PIPE PVC 08	L.F.	1628			485			334		2		3350
15119	S PUMP STATION	EA.	1								485		1
15120	S FORCE MAIN DUPLEX GRINDER PUMP STATION	EA.		1									1
15122	S STRUCTURE ABANDON (EX. STA. #12 & EX. STA. #13)	EA.	1										2
15136	S LATERAL LOCATE	EA.									1		2











SANITARY SEWER  
 REVISION 1-QUANTITIES 12/8/2021

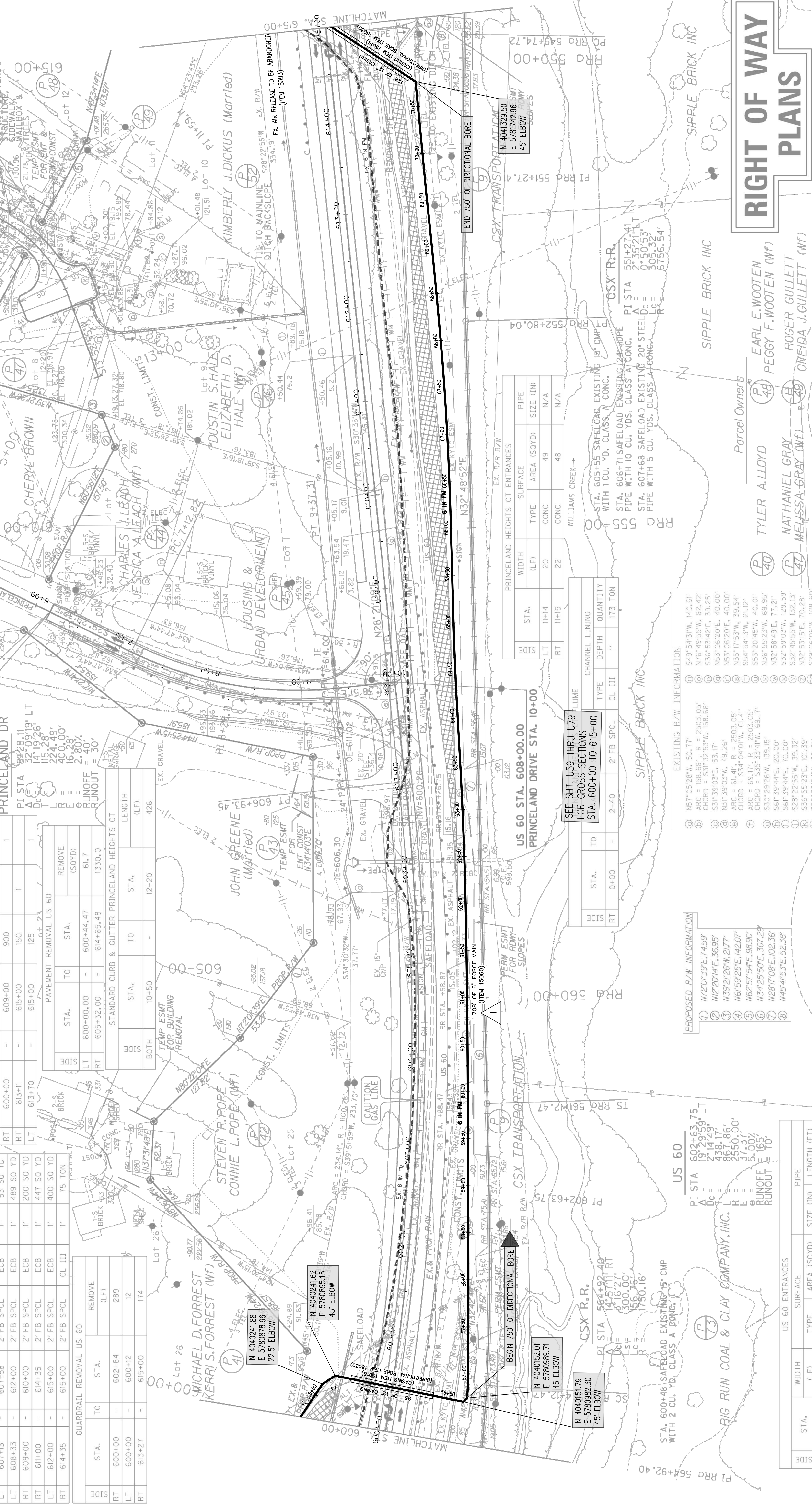
PRINCINGLAND DR DITCHES		CHANNEL LINING	
STA.	TO	SIZE/TYPE	DEPTH QUANTITY
6+50	9+00	NORM	CL III 232 TON
GUARDRAIL STEEL "W" BEAM US 60			
STA.	TO	SINGLE FACE (LF)	END TREATMENT TYPE 4A (EACH)
600+00	609+00	900	I
613+10	615+00	150	I
613+70	615+00	125	I
PAVEMENT REMOVAL US 60			
STA.	TO	STA.	REMOVE (ISOYD)
600+00.00	-	600+44.47	61.7
605+32.00	-	614+65.48	1330.0
STANDARD CURB & GUTTER PRINCINGLAND HEIGHTS CT			
STA.	TO	STA.	LENGTH (LF)
10+50	-	12+20	426

US 60 DITCHES		CHANNEL LINING	
STA.	TO	SIZE/TYPE	DEPTH QUANTITY
600+00	600+50	2' FB SPCL	CL II 46 TON
600+00	601+50	2' FB SPCL	CL III 108 TON
605+50	605+50	NORM	CL III 600 SO YD
606+12	606+12	2' FB SPCL	CL II 83 SO YD
607+13	606+66	2' FB SPCL	CL II 24 TON
608+33	612+00	2' FB SPCL	CL II 489 SO YD
609+00	610+00	2' FB SPCL	CL II 200 SO YD
611+00	614+35	2' FB SPCL	CL II 447 SO YD
612+00	615+00	2' FB SPCL	CL II 400 SO YD
614+35	615+00	2' FB SPCL	CL III 75 TON
GUARDRAIL REMOVAL US 60			
STA.	TO	STA.	REMOVE (LF)
600+00	-	602+84	289
600+00	-	600+12	12
613+27	-	615+00	174

EDGE KEY CONSTRUCTION		LOCATION	
STA.	TO	DESCRIPTION	QUANTITY
6+00	10+50	PRINCINGLAND DR STA. 6+17	20
6+00	10+50	PRINCINGLAND HEIGHTS CT STA. 10+50	20

PRINCINGLAND DR		CHANNEL LINING	
STA.	TO	SIZE/TYPE	DEPTH QUANTITY
6+00	10+50	NORM	CL III 232 TON

US 60 ENTRANCES		PIPE	
STA.	WIDTH (LF)	AREA (ISOYD)	LENGTH (FT)
606+90	22	ASPH	179
606+90	22	ASPH	24



**BEGIN CONSTRUCTION**  
 PRINCINGLAND DRIVE  
 STA. 6+16.50

**US 60 STA. 608+00.00**  
 PRINCINGLAND DRIVE STA. 10+00

**US 60 STA. 608+00.00**  
 PRINCINGLAND DRIVE STA. 10+00

**US 60**  
 STA. 600+48 SAFELOAD EXISTING 15' CMP WITH 2 CU. YD. CLASS A CONC.

**US 60**  
 STA. 602+63.75  
 2' FB SPCL

STA.	TO	TYPE	AREA (ISOYD)	SIZE (IN)	N/A
11+14	20	CONC	49	N/A	N/A
11+15	22	CONC	48	N/A	N/A

STA.	DEPTH	CL	QUANTITY
0+00	1'	CL III	173 TON
2+40	2' FB SPCL	CL III	240 TON

SEE SHT. U59 THRU U79 FOR CROSS SECTIONS STA. 600+00 TO 615+00

EXISTING R/W INFORMATION

- N57°05'28"W, 50.77'
- ARC = 158.68', R = 2503.05'
- CHORD = S31°32'55"W, 158.66'
- S31°39'03"E, 53.17'
- N31°39'03"E, 53.17'
- ARC = 61.41', R = 2503.05'
- CHORD = S34°04'01"W, 61.41'
- ARC = 69.17', R = 2503.05'
- CHORD = S35°33'41"W, 65.17'
- S30°29'26"W, 139.15'
- N32°58'49"E, 71.21'
- S61°39'44"E, 70.00'
- S28°22'55"W, 39.32'
- S36°55'23"E, 101.39'
- S50°28'54"W, 20.01'
- S50°28'54"W, 81.20'

PROPOSED R/W INFORMATION

- N72°01'39"E, 74.59'
- N22°01'41"E, 36.95'
- N39°21'26"W, 21.77'
- N67°59'25"E, 142.07'
- N62°57'54"E, 99.90'
- N34°25'50"E, 307.29'
- N287°08'E, 102.36'
- N45°W, 53'E, 52.38'

EXISTING R/W INFORMATION

- S49°54'31"W, 140.61'
- N76°49'55"W, 82.42'
- S36°53'42"E, 39.25'
- N53°06'20"E, 40.00'
- N53°06'20"E, 40.00'
- N35°17'53"W, 39.54'
- S54°54'13"W, 21.12'
- S63°20'45"W, 40.01'
- N32°58'49"E, 71.21'
- S32°59'03"W, 129.59'
- S32°45'55"W, 132.13'
- N32°53'15"E, 70.28'
- S29°06'06"W, 108.60'

Parcel Owners

- TYLER ALLOYD (P 40)
- MATHAMIEL GRAY (P 47)
- MELISSA GRAY (Wf) (P 49)
- ONEIDA J. GUILLET (Wf) (P 49)
- EARL E. WOOTEN (Wf) (P 48)
- PEGGY F. WOOTEN (Wf) (P 48)
- ROGER GUILLET (Wf) (P 49)



U.S. 60 WIDENING  
 PLAN SHEET  
 STA. 600+00 TO STA. 615+00  
 SCALE: 1"=50'



SANITARY SEWER  
 REVISION 1-QUANTITIES 12/8/2021

EDGE KEY CONSTRUCTION  
 LOCATION  
 PRINCELAND DR STA. 6+17  
 PRINCELAND HEIGHTS CT STA. 10+50

CHANNLE LINING		QUANTITY	
DEPTH	TYPE	DEPTH	QUANTITY
1'	CL III	1'	232 TON

PRINCELAND DR DITCHES		QUANTITY	
SIZE/TYPE	TYPE	DEPTH	QUANTITY
9'-00" NORM	CL III	1'	232 TON

US 60 DITCHES		QUANTITY	
SIZE/TYPE	TYPE	DEPTH	QUANTITY
2' FB SPCL	CL II	1'	46 TON
2' FB SPCL	CL III	1'	108 TON
2' FB SPCL	ECB	1'	600 SO YD
2' FB SPCL	ECB	1'	83 SO YD
2' FB SPCL	ECB	1'	24 TON
2' FB SPCL	ECB	1'	53 SO YD
2' FB SPCL	ECB	1'	489 SO YD
2' FB SPCL	ECB	1'	200 SO YD
2' FB SPCL	ECB	1'	400 SO YD
2' FB SPCL	CL III	1'	75 TON

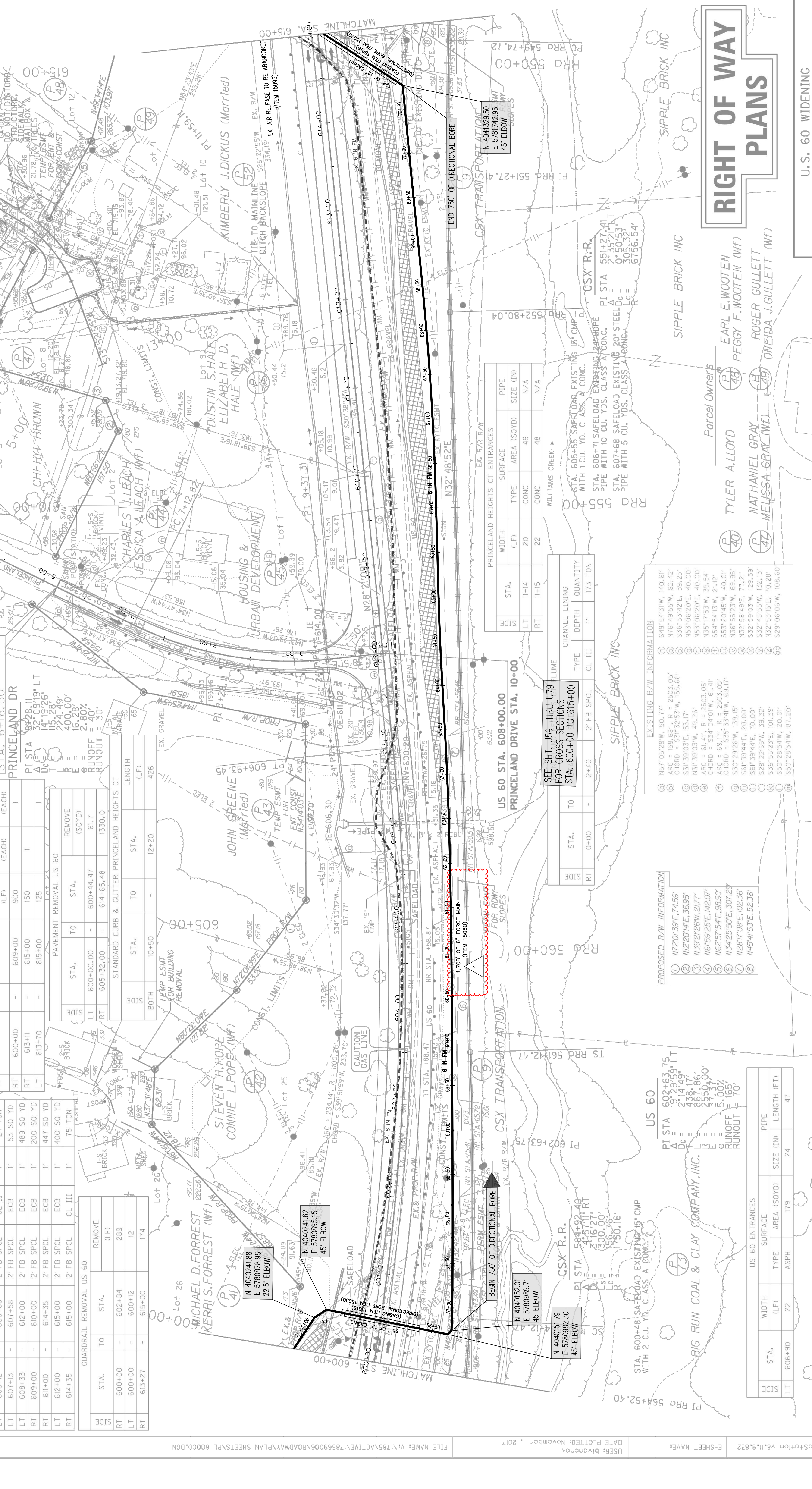
GUARDRAIL REMOVAL US 60		REMOVE	
STA.	TO STA.	(LF)	
600+00	602+84	289	
600+00	600+12	12	
613+27	615+00	174	

STANDARD CURB & GUTTER PRINCELAND HEIGHTS CT		LENGTH	
STA.	TO STA.	(LF)	
600+00.00	600+44.47	61.7	
605+32.00	614+65.48	1330.0	

PAVEMENT REMOVAL US 60		REMOVE	
STA.	TO STA.	(SQ YD)	
600+00.00	600+44.47	61.7	
605+32.00	614+65.48	1330.0	

PRINCELAND DR		QUANTITY	
TYPE	DEPTH	DEPTH	QUANTITY
2' FB SPCL	CL III	1'	232 TON

CHANNEL LINING		QUANTITY	
DEPTH	TYPE	DEPTH	QUANTITY
1'	CL III	1'	232 TON



US 60 ENTRANCES		PIPE	
STA.	WIDTH (LF)	SIZE (IN)	LENGTH (FT)
606+90	22	179	24

EXISTING R/W INFORMATION	
①	N57°05'28"W, 50.77'
②	ARC = 158.68', R = 2503.05'
③	CHORD = S31°32'55"W, 158.66'
④	S31°39'03"E, 53.17'
⑤	N31°39'03"E, 53.17'
⑥	ARC = 61.41', R = 2503.05'
⑦	CHORD = S34°04'01"W, 61.41'
⑧	ARC = 69.17', R = 2503.05'
⑨	CHORD = S35°33'41"W, 69.17'
⑩	S30°29'26"W, 139.15'
⑪	N32°58'49"E, 71.21'
⑫	S61°39'44"E, 70.00'
⑬	S28°22'55"W, 39.32'
⑭	S61°39'44"E, 70.00'
⑮	S36°55'23"E, 101.39'
⑯	S50°28'54"W, 20.01'
⑰	S50°28'54"W, 81.20'

PROPOSED R/W INFORMATION	
①	N72°01'39"E, 74.59'
②	N122°01'41"E, 36.95'
③	N39°21'26"W, 21.77'
④	N67°59'25"E, 142.07'
⑤	N62°57'54"E, 99.90'
⑥	N34°25'50"E, 307.29'
⑦	N287°08'E, 102.36'
⑧	N45°W, 53'E, 52.38'

US 60		PIPE	
STA.	WIDTH (LF)	SIZE (IN)	LENGTH (FT)
602+63.75	19	179	47

PRINCELAND HEIGHTS CT ENTRANCES		PIPE	
STA.	WIDTH (LF)	SIZE (IN)	N/A
11+14	20	CONC	49
11+15	22	CONC	48

CHANNEL LINING		QUANTITY	
TYPE	DEPTH	CL III	173 TON
2' FB SPCL	1'	173 TON	

EXISTING R/W INFORMATION	
①	S49°54'31"W, 140.61'
②	N76°49'55"W, 82.42'
③	S36°53'42"E, 39.25'
④	N53°06'20"E, 40.00'
⑤	N53°06'20"E, 40.00'
⑥	N35°17'53"W, 39.54'
⑦	S54°54'13"W, 21.12'
⑧	S31°20'45"W, 40.01'
⑨	N32°58'49"E, 71.21'
⑩	S61°39'44"E, 70.00'
⑪	S28°22'55"W, 39.32'
⑫	S61°39'44"E, 70.00'
⑬	S36°55'23"E, 101.39'
⑭	S50°28'54"W, 20.01'
⑮	S50°28'54"W, 81.20'

EXISTING R/W INFORMATION	
①	N57°05'28"W, 50.77'
②	ARC = 158.68', R = 2503.05'
③	CHORD = S31°32'55"W, 158.66'
④	S31°39'03"E, 53.17'
⑤	N31°39'03"E, 53.17'
⑥	ARC = 61.41', R = 2503.05'
⑦	CHORD = S34°04'01"W, 61.41'
⑧	ARC = 69.17', R = 2503.05'
⑨	CHORD = S35°33'41"W, 69.17'
⑩	S30°29'26"W, 139.15'
⑪	N32°58'49"E, 71.21'
⑫	S61°39'44"E, 70.00'
⑬	S28°22'55"W, 39.32'
⑭	S61°39'44"E, 70.00'
⑮	S36°55'23"E, 101.39'
⑯	S50°28'54"W, 20.01'
⑰	S50°28'54"W, 81.20'